

2010 King Valley Art Show Awards

Acquisitive Awards

Grand Winner sponsored by **Dal Zotto Wines**.....\$2,500

Awarded to.....

Section 1 'Our Water, Our Future' sponsored by GHD P/Ltd (in partnership with Goulburn Murray Water)1,000

Awarded to.....

Section 2 **Oil/Acrylic** sponsored by Hargraves Secured Investments.....\$1,000

Awarded to.....

Section 3 **Oil/Acrylic** sponsored by King River Estate Wines500

Awarded to.....

Section 4 **Watercolour/Gouache** sponsored by Redbank Wines.....\$1,500

Awarded to.....

Section 5 **Watercolour/Gouache** sponsored by Whitlands Engineering.....\$750

Awarded to.....

Section 6 **Watercolour/Gouache** sponsored by Boggy Creek Vineyards.....\$500

Awarded to.....

Section 7 **Pastel** sponsored by Gracebrook Vineyards.....\$750

Awarded to.....

Section 8 **Pastel** sponsored by Boonderoo Farm.....\$500

Awarded to.....

Section 9 **Work on Paper** sponsored by Empire Creative Group.....\$500

Awarded to.....

Section 10 **Work on Paper** sponsored by Casa Luna Accommodation.....\$300

Awarded to.....

NON Acquisitive Awards (Available for Purchase)

Oil/Acrylic Award sponsored by Garry Nash Real Estate\$1,000

Awarded to.....

Any Medium Award sponsored by Shades of Art.....500

Awarded to.....

Local Artist Award sponsored by RBA Financial Group.....\$500

Awarded to.....

Local Scene Award sponsored by Jenny Ashby & Associates.....\$250

Awarded to.....

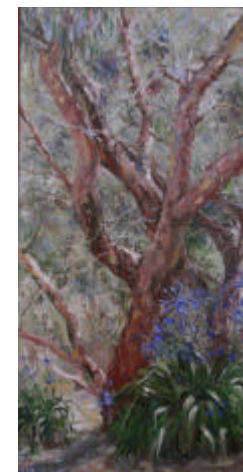
People's Choice determined by popular vote over weekend.....\$500

Sponsored by King Valley Tourism Association Inc



Catalogue

11 to 14 June 2010
Queens Birthday Long Weekend



2009 Grand Winner - Chris Sullivan "Gum Tree"

King Valley Cucina
4515 Wangaratta-Whitfield Road, King Valley

Supported by the King Valley Tourism Association

www.kingvalleyartshow.com.au

Return your catalogue for reuse, if not needed.

Official Opening Program.

- 8:00 pm Welcome by Chris Hazell
- 8:05 pm The Hon. Tim Holding officially opens the 13th King Valley Art Show
- 8:10 pm Judge Noel Waite AO FVAS announces the winners and gives her critique

Canapés: Whitfield & District Primary School Parents Association

Harpist: Wendy Batey

Thanks to:

Barb and Walter Sartori

Rinaldo's Cas Cucina of Wangaratta

Hamper Donations

Wine donations:

Avalon Wines; Bettio Wines; Boggy Creek Vineyard; Chrismont Wines; Eminence; Flying Duck; Dalz Otto; Gracebrook Vineyards; King River Estate; La Cantina; Pizzini Wines; Politini Wines, Redbank; Sam Miranda; Station Creek Wines; and Wood Park Wines.

Sales Arrangements

- Sales will commence following the official opening and award announcements
- A red sticker on a work indicates that it is now unavailable for sale
- Works that have received Non-acquisitive awards are available for sale
- The sales desk will arrange for the purchase of your chosen work
- All work will remain in the exhibition until Monday when items can be collected from 5pm onwards
- Delivery to Melbourne can be arranged
- Payment can be made by cash, cheque or Eftpos / credit card..

Introducing our Judge: Noel Waite AO FVAS

Noel Waite graduated from Swinburne University in Art

She was a guest artist and judge at the Camberwell Rotary Show in 2006 and the Waverley Watercolour Exhibition in 2009.

She has held 9 solo exhibitions and undertaken many portrait commissions including the previous Chief Commissioner of Police, Christine Nixon in 2008. She has received a 'Highly Commended' for her portrait in the Nada Hunter Portrait Prize at the VAS (Victorian Artists Society) in 2009.

Noel is currently in her third year as President of the Victorian Artists Society (VAS). She instigated the VAS 'Women Painting Women' for the Centenary of the Women's Vote in 2008 and VAS 'People Painting People in 2009 and 2010.'

A short explanation of Mediums

Oil:

Linseed or poppyseed oil based paint usually applied by brush to stretched canvas or linen or to wooden board. A traditional medium used by Da Vinci on "Mona Lisa" and Monet's Waterlilies. In use since the 14th century it continues to be favoured by the most respected painters of today.

Acrylic:

Water based medium developed in the 20th century as a convenient alternative to oil. Usually applied by brush to stretched canvas or linen. Used by many painters since 1980s eg David Hockney.

Watercolour:

Water based medium applied by soft, absorbent brushes to high quality thick cotton paper. A medium that requires deft and minimal application. Used by many English landscape artists such as Constable and Turner. This year's Judge, Noel Waite, is a highly trained watercolourist.

Gouache:

A medium very similar to watercolour but with a chalky filler added for more body and over-painting qualities. Traditionally used by designers, Australian artist Fred Williams applied it with wonderful results in many of his distinctive landscapes.

Pastel:

A medium developed in the 19th century and popular with many Impressionists – especially Degas. The pastel is a soft, dry medium that comes in handy cylindrical form and is applied to textured, coloured paper for best effects. It is a medium of great immediacy and so is popular with many artists.

Work on Paper:

Not a medium as such – rather an explanation of any medium that is used on paper. In our Art Show it includes all printing methods such as etching, screen and lino prints, as well as mono-prints and mixed media (ie a number of different mediums applied to the same piece of paper. Andy Warhol's Campbell soup cans are a famous example of a "work on paper".